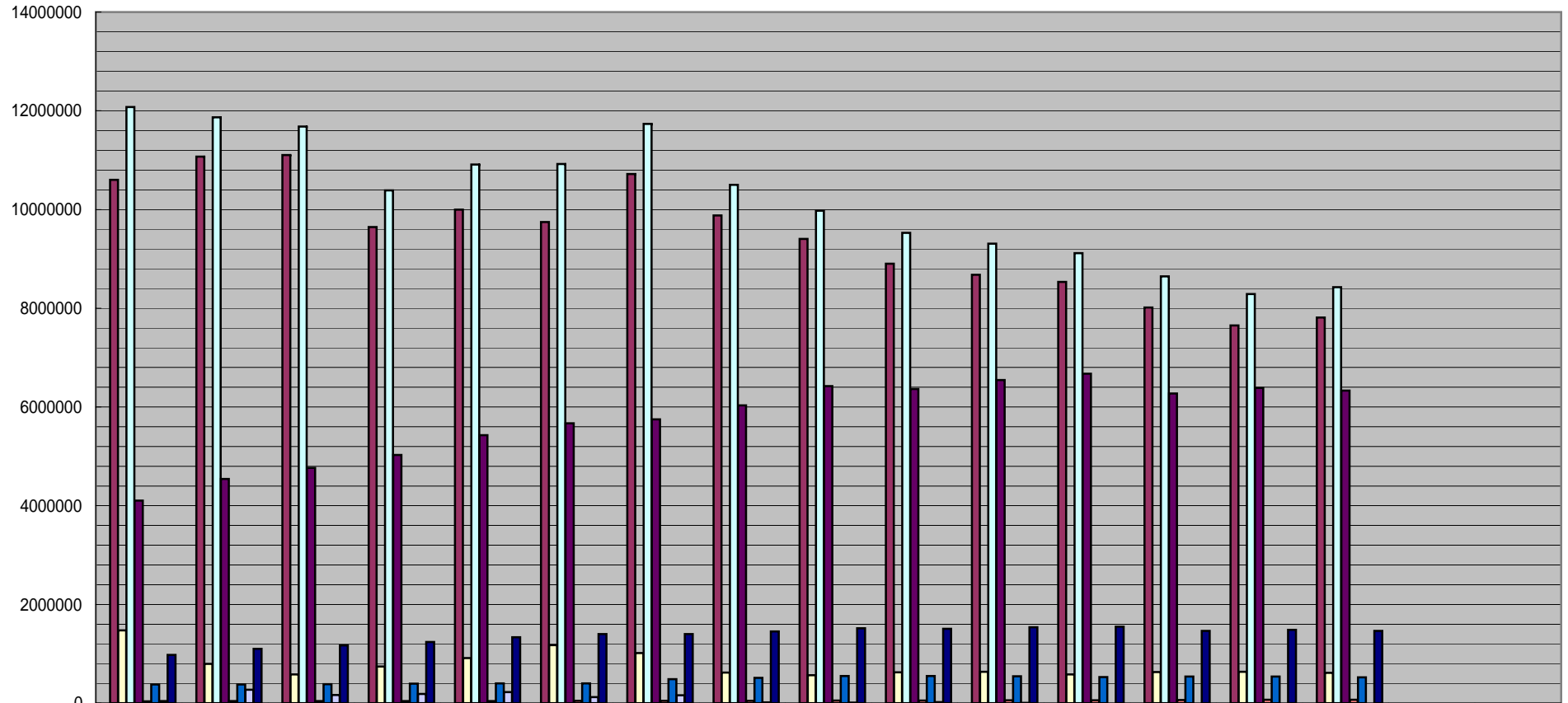


市税推移



年度	3	4	5	6	7	8	9	10	11	12	13	14	15	16	17	18	19
個人住民税	10,600,433	11,074,314	11,101,602	9,647,669	9,996,940	9,746,457	10,717,227	9,879,748	9,405,797	8,903,477	8,676,675	8,534,885	8,015,404	7,651,638	7,811,224		
法人住民税	1,475,872	793,983	581,162	740,950	913,821	1,175,036	1,017,575	619,333	568,635	624,010	634,073	581,275	629,456	636,183	616,594		
市民税 (住民税)	12,076,305	11,868,297	11,682,764	10,388,619	10,910,761	10,921,493	11,734,802	10,499,081	9,974,432	9,527,487	9,310,748	9,116,160	8,644,860	8,287,821	8,427,818		
固定資産税	4,102,884	4,540,971	4,765,882	5,026,466	5,426,703	5,670,648	5,748,183	6,031,676	6,420,809	6,364,190	6,545,105	6,671,774	6,273,325	6,385,055	6,330,559		
軽自動車税	39,423	40,620	42,253	44,283	45,416	48,187	49,216	50,575	51,476	54,940	58,065	60,652	63,958	67,778	71,704		
市たばこ税	379,873	377,380	383,624	396,603	401,880	402,071	486,315	510,316	548,117	552,467	544,211	527,515	540,062	539,691	526,238		
特殊土地 保有税	44,159	275,086	165,249	186,255	225,474	122,733	159,303	18,144	8,600	18,898	7,185	0	0	0			
都市計画税	980,027	1,102,718	1,169,934	1,238,132	1,336,098	1,399,778	1,398,461	1,451,068	1,519,530	1,504,473	1,540,506	1,551,347	1,465,609	1,487,338	1,463,444		

■ 年度
 ■ 個人住民税
 □ 法人住民税
 □ 市民税 (住民税)
 ■ 固定資産税
 ■ 軽自動車税
 ■ 市たばこ税
 □ 特殊土地 保有税
 ■ 都市計画税